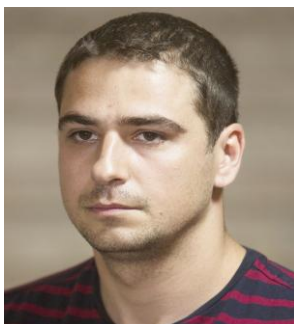




Europass Curriculum Vitae



Personal information

First name(s) / Surname(s) **Nicolae CĂLIN**
Address(es) Bucharest, sector 5,
Telephone(s) 0314033400 **0314381744**
Fax(es)
E-mail nicolae_cln@yahoo.com, nickcalin@gmail.com,
Nationality romanian
Gender Masculin

Desired employment / **Geological Survey of Romania - National Institute for Research and Development in Geology, Geophysics, Geochemistry and Remote Sensing - IGR**

Occupational field **scientific research institute**

Work experience 12 years and 8 months

Dates 01.11.2008 – present:

Occupation or position held **Scientific Researcher**

Main activities and responsibilities Research in the Mineralogy Laboratory currently Radiometry and Rx Laboratory. Knowledge and working with machines: Bruker D8 Advance with the help of which is realized X-ray powder diffractometry; the Tensor 27 device performs infrared spectrometry; Jupiter STA 449 – thermal analysis; Cameca X50 electron microscopy shows the amount of chemical elements expressed in oxides; the Rem 100 scanning electron microscopy, we obtain images of the surface topography of the main phases. Assistance in preparing bachelor's theses, master's degree for students in the same field. Preparation of specialized papers and participation in conferences, seminars, symposia, workshops in order to publish them in proceedings, BDI and ISI magazines. Participation and preparation of works following contracts signed between the employing institution and beneficiary.

Name and address of employer Geological Survey of Romania - National Institute for Research and Development in Geology, Geophysics, Geochemistry and Remote Sensing - IGR, sector 1, Street Caransebeş, no. 1, Bucharest

Type of business or sector Research: Geology – Mineralogy (National Museum of Geology) Kiseleff Road, sector 1, no.2, <https://www.geology.ro/personal/>

Dates	01.11.2008 – 31.07.2018:
Occupation or position held	research assistant
Main activities and responsibilities	Specialized work in the Department of Mineralogy: mineralogy programs (analytical experience): X-Ray diffraction, Infrared spectrometry, thermal analysis, scanning electron microscopy, Cameca X50 electron microscopy chemical analyses, teaching, guiding, arranging exhibitions, participation in laboratory activities, enrich collections by collecting samples in field work. Assistance in preparing bachelor's theses, master's degree for students in the same field. Preparation of specialized papers and participation in conferences, seminars, symposia, workshops in order to publish them in proceedings, BDI and ISI magazines.
Name and address of employer	Geological Survey of Romania - National Institute for Research and Development in Geology, Geophysics, Geochemistry and Remote Sensing - IGR, sector 1, Street Caransebeş, no. 1, Bucharest
Type of business or sector	Research: Geology – Mineralogy (National Museum of Geology) Kiseleff Road, sector 1, no.2, https://www.geology.ro/personal/
Dates	01.09.2008 – 31.10.2008
Occupation or position held	museum guide
Main activities and responsibilities	Guiding, teaching, arranging exhibitions, participation in laboratory activities, enrich collections by collecting samples. Preparation of specialized papers and participation in conferences, seminars, symposia, workshops in order to publish them in proceedings, BDI and ISI magazines. Mineralogy programs (analytical experience): X-Ray diffraction, Infrared spectrometry, thermal analysis, scanning electron microscopy analyses.
Name and address of employer	Geological Survey of Romania - National Institute for Research and Development in Geology, Geophysics, Geochemistry and Remote Sensing - IGR, sector 1, Street Caransebeş, no. 1, Bucharest
Type of business or sector	Research: Geology – Mineralogy (National Museum of Geology) Kiseleff Road, sector 1, no.2, https://www.geology.ro/personal/
Education and training	
Dates	04.2012 – 03.2013
Title of qualification awarded	Certificate environmental engineering /
Name and type of organisation providing education and training	Transilvania University of Brasov
Principal subjects / occupational skills covered	Pollution, environmental protection and management
Level in national or international classification	Science
Title of qualification awarded	University

Dates	01.10.2009 – 20.09.2012
Title of qualification awarded	Doctor's degree – academic degree No. 3930 MD from 20.06.2013
Name and type of organisation providing education and training	Geology and Geophysics faculty, University Bucharest
Principal subjects / occupational skills covered	Science
Level in national or international classification	University
Dates	30.09.2011 – 05.03.2012
Title of qualification awarded	Certificate
Name and type of organisation providing education and training	Faculty of Science, Department of Geology, Mineralogy Laboratory, Liège University, Belgium
Principal subjects / occupational skills covered	Mineralogy and crystallography of minerals
Level in national or international classification	University
Dates	03.10.2008 – 02.07.2009
Title of qualification awarded	Master's degree – academic degree
Name and type of organisation providing education and training	Geology and Geophysics faculty, University Bucharest
Principal subjects / occupational skills covered	Evaluation of sedimentary basin
Level in national or international classification	University
Dates	01.10.2003 – 23.06.2008
Title of qualification awarded	license, title: diplomat engineer – academic degree
Name and type of organisation providing education and training	Geology and Geophysics faculty, University Bucharest
Principal subjects / occupational skills covered	Technical geology
Level in national or international classification	University

Personal skills and competences

Mother tongue(s) Romanian language

Other language(s)

Self-assessment

European level (*)

Engleză

Franceză

Understanding				Speaking				Writing	
Listening		Reading		Spoken interaction		Spoken production			
B2	User Independent	B2	User Independent	B1	User Independent	A2	User Elementary	B1	User Independent
B2	User Independent	B2	User Independent	B1	User independent	A1	User Elementary	B1	User Independent

(*) [Common European Framework of Reference for Languages](#)

Social skills and competences Communicative, responsive, sociable, teamwork

Organisational skills and competences Persevering, promptly, vertically

Technical skills and competences use of equipment, sampling, sample preparation, interpretation of samples analyzed

Computer skills and competences Microsoft office, surfer, corel, adobe,

Artistic skills and competences Wood working, rock processing

Other skills and competences Sports: cycling, jogging, mountain hiking, team games: handball, football, basketball.

Driving licence Yes, category: **AM, B1, B.**

Additional information participation in projects, symposia, conferences, seminars, workshops

**Annex no. 1:
Communications, abstracts,
articles**

- NICOLAE CĂLIN, AURORA MĂRUȚA IANCU, OANA – CLAUDIA CIOBOTEA BARBU, DELIA – GEORGETA DUMITRAȘ, ȘTEFAN MARINCEA, CIPRIAN CONSTANTINA, DIANA PERȘA, EDUARD COSTIN GHINESCU, INGRID DIANA POLL, MARIA ANGELA ANASON, ADRIANA MARIANA ION, OANA GABRIELA RĂDOI, VALENTIN PARASCHIV, MONICA MACOVEI, CRISTINA SAVA, ALINA MERCAN (2020): **LI-MINERALS FROM CONȚU PEGMATITES, ROMANIA. EMERGEMAT 3RD INTERNATIONAL CONFERENCE ON EMERGING TECHNOLOGIES IN MATERIALS ENGINEERING 29 – 30 OCTOBER, BUCHAREST, ROMANIA (ABSTRACT). No. 3/2020, ONLINE: ISSN 2602-0424, ISSN-L 2602-0416; PRINT: ISSN 2602-0416, ISSN-L 2602-0416, AVANMAT 2020, SECTION 3 – CRITICAL MATERIALS (SUBSTITUTION AND RECOVERY), PG. 93.**
- NICOLAE CĂLIN, AURORA MĂRUȚA IANCU, DELIA – GEORGETA DUMITRAȘ, OANA CLAUDIA CIOBOTEA BARBU, ADRIANA – MARIANA ION, CIPRIAN CONSTANTINA, DIANA, PERȘA, INGRID DIANA POLL, MARIA ANGELA ANASON, CRISTINA SAVA, OANA GABRIELA RĂDOI, ȘTEFAN MARINCEA (2020): **MINERALS WITH ECONOMIC POTENTIAL, PRESENT IN THE PEGMATITES FROM CONȚU, CINDREL MOUNTAINS, ROMANIA. CAJG 3RD CONFERENCE OF THE ARABIAN JOURNAL OF GEOSCIENCE 2- 5 NOVEMBER 2020. (PROCEEDINGS - EXTENDED ABSTRACTS – 4 PAGES).**
- NICOLAE CĂLIN, DELIA GEORGETA DUMITRAȘ, ȘTEFAN MARINCEA, CIPRIAN CONSTANTINA, ADRIANA-MARIANA ION (2020): **MINERALS VIEWED THROUGH THE ECONOMIC PRISM PRESENT IN CONȚU FIELDS, CINDREL MOUNTAINS, ROMANIA. XXTH INTERNATIONAL MULTIDISCIPLINARY SCIENTIFIC GEOCONFERENCE SURVEYING GEOLOGY AND MINING, ECOLOGY AND MANAGEMENT – SGEM 2020, BULGARIA, ALBENA.(ARTICLE – 9 PAGES). ISBN 978-619-7603-04-0, ISSN 1314-2704, DOI: [HTTPS://DOI.ORG/10.5593/SGEM2020/1.1/S01.023](https://doi.org/10.5593/sgem2020/1.1/s01.023), PG. 179 – 187.**
- CIPRIAN CONSTANTINA, DELIA GEORGETA DUMITRAȘ, ALEXANDRU LASLO-FAUR, NICOLAE CĂLIN, IULIANA PASUK (2020): **STUDY OF ARGILLIZED (BENTONITIZED) DEPOSITS IN GURASADA AREA SOUTHERN APUSENI MOUNTAINS, ROMANIA. XXTH INTERNATIONAL MULTIDISCIPLINARY SCIENTIFIC GEOCONFERENCE SURVEYING GEOLOGY AND MINING, ECOLOGY AND MANAGEMENT – SGEM 2020, BULGARIA, ALBENA. (ARTICLE – 8 PAGES). ISBN 978-619-7603-04-0, ISSN 1314-2704, DOI: [HTTPS://DOI.ORG/10.5593/SGEM2020/1.1/S01.040](https://doi.org/10.5593/sgem2020/1.1/s01.040), PG. 317 – 324.**
- NICOLAE CĂLIN, DELIA GEORGETA DUMITRAȘ, GEORGE CĂTĂLIN SIMION, ȘTEFAN MARINCEA, ADRIANA-MARIANA ION, CIPRIAN CONSTANTINA, INGRID POLL, AURORA MĂRUȚA IANCU, CRISTINA SAVA (2020): **PHOSPHATES DIVERSITY AND DEVELOPMENT IN CONȚU PEGMATITES, CINDREL MOUNTAINS, ROMANIA. ABSTRACTE PUBLICATE ÎN REVISTE COTATE ISI GOLDSCHMIDT 2020, HAWAII 21 – 26 JUNE 2020. [HTTPS://DOI: 10.46427/GOLD2020.310](https://doi.org/10.46427/gold2020.310), CONFERENCE.**
- ADRIANA ION, ANA COSAC, CĂLIN NICOLAE (2019): **VERTICAL DISTRIBUTION OF COPPER AND LEAD IN URBAN CONTAMINATED SOIL FROM AREAS WITH INDUSTRIAL ACTIVITIES. 19TH INTERNATIONAL MULTIDISCIPLINARY SCIENTIFIC GEOCONFERENCE SGEM 2019, BOOK NO. 5.1, PAGES: 807-814, ISBN: 978-619-7408-85-0, DOI: 10.5593/sgem2019/5.2/S20.101. (ARTICLE – 8 PAGES).**
- NICOLAE CĂLIN, DELIA GEORGETA DUMITRAȘ, ȘTEFAN MARINCEA, EDUARD GHINESCU (2019): **MINERALS INDICATED FOR THE FIRST TIME IN CONȚU PEGMATITES FIELDS, CINDREL MOUNTAINS, ROMANIA. SIMPOZION DEDICAT ANIVERSĂRII A 80 DE ANI A PROFESORULUI EMIL CONSTANTINESCU, 22.10.2019. POSTER.**
- NICOLAE CĂLIN, DELIA GEORGETA DUMITRAȘ, ȘTEFAN MARINCEA, AURORA MĂRUȚA IANCU, CRISTINA SAVA (2019): **METASOMATIC REPLACEMENTS IN THE PHOSPHATE MINERAL ASSOCIATION FROM THE LI-BEARING PEGMATITES IN CONȚU, ROMANIA. GOLDSCHMIDT 2019, ABSTRACT BARCELONA, 18 – 23 AUGUST.**
- OANA CLAUDIA CIOBOTEA-BARBU, IOANA-ALINA CIOBOTARU, DANUT-IONEL VAIREANU, DELIA GEORGETA DUMITRAȘ, NICOLAE CĂLIN (2019): **XRD, RAMAN AND SEM SURFACE ANALYSIS ON Ni-Cu ELECTRODEPOSITED LAYERS. JOURNAL OF OPTOELECTRONICS AND ADVANCED MATERIALS 07/2019, VOL. 21, ISS 7 – 8: 536-540. COTAT ISI.**
- OANA CLAUDIA CIOBOTEA-BARBU, IOANA-ALINA CIOBOTARU, DANUT-IONEL VAIREANU, NICOLAE CĂLIN (2018): **XRD, RAMAN AND SEM SURFACE ANALYSIS ON Ni-Cu ELECTRODEPOSITED LAYERS. 1ST INTERNATIONAL CONFERENCE ON EMERGING TECHNOLOGIES IN MATERIALS ENGINEERING EMERGEMAT AND 4TH INTERNATIONAL WORKSHOP ON MATERIALS UNDER EXTREME CONDITIONS SUPERMAT 14-16 NOVEMBER 2018, BUCHAREST, ROMANIA. (POSTER).**
- NICOLAE CĂLIN, GEORGE SIMION (2018): **ANALIZĂ MINERALOGICĂ PRELIMINARĂ PE PROBELE COLECTATE DIN IAZURILE DE DECANTARE STUDIATE. 1ST INTERNATIONAL CONFERENCE ON EMERGING TECHNOLOGIES IN MATERIALS ENGINEERING EMERGEMAT AND 4TH INTERNATIONAL WORKSHOP ON MATERIALS UNDER EXTREME CONDITIONS SUPERMAT 14-16 NOVEMBER 2018, BUCHAREST, ROMANIA. REZERVE SECUNDARE DE MATERII PRIME: SURSE DE MATERIALE CRITICE. PLANUL SECTORIAL AL MINISTERULUI CERCETĂRII ȘI INOVĂRII (CTR. 9PS/2017). ERA-MIN, HORIZON 2020, BIOCRITICALMETALS (CTR. 16/2016). COMUNICARE ÎN PLEN.**
- IANCU, A.M., MARINCEA S., DUMITRAȘ D.G., SAVA GHINET C., CĂLIN N. (2018): **COMPARATIVE MINERALOGICAL AND GEOCHEMICAL STUDY ON FOUR PHOSPHOGYPSUM DEPOSITS IN ROMANIA. 22ND GENERAL MEETING OF IMA, MELBOURNE 2018, ABSTRACT VOLUME, 467.**
- HIRTOPANU P., SCOTT W.P., CĂLIN N.(2018): **NEW DATA ON JOHANNSENITE AND ITS MINERAL ASSOCIATIONS IN BISTRITA MTS., ROMANIA. 22ND GENERAL MEETING OF IMA, MELBOURNE 2018, ABSTRACT VOLUME, 461.**
- SEBE-RADOI O.G, DUMITRAȘ D.G., MARINCEA S., CĂLIN N., BIRGĂOANU D., BARBU O.C. (2018): **PRELIMINARY MINERALOGICAL STUDY OF THE DIATOMITES FROM MINIS, ZARAND BASIN, ROMANIA. 22ND GENERAL MEETING OF IMA, MELBOURNE 2018, ABSTRACT VOLUME, 397.**
- OANA-GABRIELA SEBE-RADOI, DELIA-GEORGETA DUMITRAȘ, ȘTEFAN MARINCEA, NICOLAE CĂLIN (2017): **STUDIUL PALEONTOLOGIC ASUPRA DEPOZITULUI DE DIATOMIT DIN DOBROGEA DE SUD. CONTRIBUTII ALE DIATOMITULUI ASUPRA INDUSTRIEI AGRICOLE. ICDPP, Comunicare Științifică, București 10 noiembrie 2017.**
- DIANA PERȘA, DELIA DUMITRAȘ, ȘTEFAN MARINCEA, CONSTANTIN COSTEA, NICOLAE CĂLIN, OANA BARBU (2017): **THE GEOTHERMAL WATERS FROM THE BASIN OF BEIUȘ, ROMANIA. SANTORINI, GRECIA. (POSTER).**
- SEBE-RADOI, O.,G., DUMITRAȘ, D.,G.,MARINCEA, S., CĂLIN, N., BIRGĂOANU, D., BARBU, O.,C.(2017): **Preliminary paleontological and mineralogical study of the diatomites from Patarlagele, Romania. Goldschmidt Abstract, Paris august 13-18 2017.**
- OANA-GABRIELA SEBE-RADOI, DELIA-GEORGETA DUMITRAȘ, ȘTEFAN MARINCEA, NICOLAE CĂLIN, CONSTANTIN COSTEA (2017): **PRELIMINARY PALEONTOLOGICAL AND MINERALOGICAL STUDY OF THE DIATOMITES FROM MINIS, ZARAND BASIN, ROMANIA. LESBOS, GRECIA. (ABSTRACT).**
- ADRIANA ION, DELIA DUMITRAȘ, CĂLIN NICOLAE (2016): **RADIOLOGICAL IMPLICATION DUE TO HEAVY MINERALS IN SURFACE SOIL FROM DITRĂU MASSIF – EASTERN CARPATHIANS, ROMANIA, 35 TH INTERNATIONAL GEOLOGICAL CONGRESS, CAPE TOWN, ABSTRACTS VOLUME, 1392.**
- ANASON A., MARINCEA Ș., DUMITRAȘ D., GHINET C., IANCU A. AND CĂLIN, N.(2015): **Application on X-ray diffractometry on the skarn mineralization, in the upper basin of Mraconia Valley, România. Abstract 2015 Goldschmidt.**
- MUNTEANU MARIAN, CIOACĂ MIHAELA ELENA, ION DANIEL, RUSU CONSTANTIN, FLORIAN NELU, CĂLIN NICOLAE, (2014): **Caracteristici mineralogice și chimice ale unor halde și iazuri de decantare din Patrulaterul Aurifer – date noi din proiectul Susmin: Comunicare Simpozionul Mircea Savul 25 octombrie.**
- MUNTEANU MARIAN, COSTIN GELU., CIOACĂ MIHAELA ELENA, DUMITRAȘ DELIA-GEORGETA, MARINCEA ȘTEFAN, CĂLIN NICOLAE, IANCU AURORA-MĂRUȚA (2014): **Aurul nativ din zăcămintul Kittila (Finlanda) și din Patrulaterul aurifer (România) comparație pe baza datelor preliminare din proiectul MAXI, Comunicare Simpozionul Mircea Savul, Iasi, 25 octombrie.**
- N. CĂLIN, A-M. FRANSOLET, M. BAJOT, Ș. MARINCEA, D-G. DUMITRAȘ, F. HATERT, M.A. ANASON, A.M. IANCU (2014): **A possible new mineral species, “ferrogatehouseite” (Fe,Mn)₂(PO₄)₂(OH)₄ from Conțu pegmatite, Romania. 21 st General Meeting of IMA South Africa 2014, Abstract volume, GP 10 Pegmatites, and pegmatite mineralogy, poster, 264, DOI: 10.13140/2.1.1722.8160.**
- IANCU, A.M., DUMITRAȘ, D.G., BILAL, E., MARINCEA, Ș., GHINET, C., CĂLIN, N., ANASON, M.A. (2013): **REE Content of phosphogypsum from Romania. Mineralogical Magazine, 77 (5) 1352. Abstract**
- ȘTEFAN MARINCEA, DELIA-GEORGETA DUMITRAȘ, NICOLAE CĂLIN, ANGELA MARIA ANASON, ANDRÉ MATHIEU FRANSOLET, FREDERIC HATERT (2013): **Spurrite, Tilleyte and associated minerals in the exoskarn zone from cornet Hill (Metaliferi Massif, Apuseni Mountains, Romania). The Canadian Mineralogist. Factor impact 1,18; 06/2013; 51(3): 359 – 375 DOI: 10.3749/can.min.51.3.359. (Articol). Cotat: ISI.**
- CĂLIN, N., DUMITRAȘ, D.G., MARINCEA, Ș., IANCU, A.M., ANASON, M. A.(2012): **Minerale principale și accesorii în pegmatitele litifere de la Conțu, Munții Cindrel, România. Comunicare – Seminar științific: “Evaluarea activității de cercetare științifică la finalul stagiului doctoral – 11 iulie 2012”.**
- CĂLIN, N., DUMITRAȘ, D.G., MARINCEA, Ș., IVAN, I., IANCU, A.M.(2012): **Minerale noi pentru pegmatitele litifere din Munții Cindrel, România. Comunicare - Seminar științific – Workshop de promovare și diseminare în domeniul dezvoltării durabile și protecției mediului “Conservarea capitalului natural – o prioritate a secolului XXI – 26 iunie 2012”. (Poster).**
- MARINCEA, Ș., DUMITRAȘ, D.G., CĂLIN, N., ANASON, A.M., FRANSOLET, A.M. & HATERT, F. (2012): **Spurrite, Tilleyte and associated minerals in the exoskarn zone from Cornet Hill (Metaliferi Massif, Apuseni Mountains, Romania). Geophysical Research Abstracts (EGU General Assembly 2012), 14, EGU 2012-2061.**

**Annex no. 1 -continuation:
Communications, abstracts,
articles**

- CĂLIN, N., DUMITRAS, D-G, MARINCEA, Ș., IANCU, A.M., GHINET, C., ANASON, M. A. (2011): **Pegmatite phosphates, Conțu field, Cibin Mountains, Romania. ECMS 2011, 7th European Conference on Mineralogy and Spectroscopy** 4-7 September, Germany. *Revistă internațională.*
- IANCU, A.M., MARINCEA, Ș., DUMITRAS, D-G, GHINET, C., CĂLIN, N. (2011): **The chemistry and the environmental impact of the Romanian phosphogypsum. Goldschmidt Conference**, 14-19 April, Prague, Czech Republic, **Abstract Volume, 1076.**
- CĂLIN, N. (2011): **Date preliminare despre mineralele din pegmatitele câmpului Conțu, Carpații Meridionali. Comunicare – Seminar științific** 19.05.2011. Institutul Geologic al României.
- CĂLIN, N., IANCU, A.M., ANASON, M. A., DUMITRAS, D.-G., MARINCEA, Ș., PORUMBESCU, C. (2011): **Geochemistry of phosphogypsum from Turnu Măgurele, România. Vol. 13, EGU 2011-3151**, European Geosciences Union General Assembly 2011, Vienna, Austria, 03-08 April 2011. *Revistă internațională.*
- CĂLIN, N.(2010): **Studiul mineralelor din pegmatitele de la Conțu, Munții Cibin. Comunicare – Seminar științific** 17.12.2010. *cu privire la rezultatele obținute în cadrul tezelor de doctorat.*
- DUMITRAS, D-G, MARINCEA, Ș., ANASON, M. A., CĂLIN, N. & IANCU, A.M. (2010): **"Geodiversity in the Natural Park – Porțile de Fier: cave mineralogy and mineral deposits". Geologica Balcanica (XIX Congress of the Carpathian – Balkan Geological Association, Thessaloniki, Greece. 23-26 September 2010, Abstracts Volume), 39, 1-2, 104-105. Revistă internațională.**
- IANCU, A.M., MARINCEA, Ș., DUMITRAS, D-G, ANASON, M.A. & CĂLIN, N. (2010): **"Mineralogical and geochemical peculiarities of phosphogypsum from Turnu Măgurele (Romania)". Romanian Journal of Mineral Deposits, 84 (Special Issue), pp. 74-76. Revistă națională.**
- ANASON, M.A., IANCU, A.M., CĂLIN, N. (2010): **"Analyses methods of the mineralogical laboratory in the Geological Institute of Romania". Oltenia Studii și Comunicări, Științele Naturii, (The International Conference, "The Museum and the scientific research", Craiova, 16-18 september 2010), pp. 303-306. Cod CNCSIS: 703 revista B+ (revista indexată BDI).**
- CĂLIN, N., DUMITRAS, D-G & MARINCEA, Ș. (2010): **Li-bearing pegmatites from Conțu, Romania. Acta Mineralogica – Petrographica, (The 20th General Meeting of the International Mineralogical Association, 21-27 August 2010, Budapest, Hungary). Abstract Series 6, Szeged, MC 100G – Mineralogical crystallography, pp. 715. Revistă internațională.**
- CĂLIN, N., DUMITRAS, D-G, COSTEA, C., MARINCEA, Ș. (2009): **Li-bearing and associated minerals in pegmatites from Conțu, Cindrel Mountains. International Symposium Mineralogy and Geodiversity, dedicated to: The 70th anniversary of Prof. dr. Emil Constantinescu, Bucharest 30-31 october 2009. Romanian Journal of Mineralogy, Vol. 84, pp. 7-9. Revista națională.**
- CĂLIN, N.(2008): **The geological and geophysical conditions of the Băbeni structure: formation and hydrocarbon evolution in the Burdigalian (Helvețian). The Annual Conference of the Geological Society of Romania, October 4-5, 2008, Abstracts. Institutul Geologic al României. București, Vol. 75, pp. 10. Revistă națională.**

Annex no.2: PROJECTS

Participant in the project: Phases C-S-H-A dans les skarns de tres haute temperature de Roumanie. Contract 58/2008.

Participant in the project: Geological and Geophysical Study for estimating the stability of the slopes of the Ceahlău Massif, on the protection area of the country road DJ 155F Bistricioara – Durau – Izvorul Muntelui. Contract no. 2341/12.12.2008.

Participant in the project: Protected areas: environmental quality assessment in order to capitalize on natural resources and sustainable development – PROMED, contract 31-030/2007.

Participant in the project: POSDRU/88/1.5/S/61150, priority axis no 1. Contract no. 16516/Geologie/2.

Participant in the project: Assessment of the hydrocarbon potential of the Silurian source rocks from the Eastern of moldavian Platform. Contract no. TOTAL EXS 12.04/26.10.2012.

Participant in the project: Contract 30/08/2013 between IGR and ALKhibra – Strategic Framework Partnership Agreement for performing mineralogical analyzes.

Participant in the project: Mineralogical studies on high – temperature skarns in Romania. A way to understand the change in the Portland type clinkers and cements, PN-II-ID-PCE-2011-3-0023. Contract 38/2011.

Participant in the project: ERA-MIN 3-007 PT 339 Mineral Analysis using X-ray Imaging – MAXI, Contract 339/25.03.2014.

Participant in the project: PEDIOL – Ecological products based on diatomaceous earth and essential oils for reducing food chain residues and contaminants, Contract 156/2014.

Participant in the project: PN 16060202– Nucleus project phase 4.

Participant in the project: Sectorial Plan Contract 9PS/17.11.2017 – National Register of Secondary Reserves of Raw Materials with Economic Importance Results from Mining Residues.

Participant in the project: Complex projects carried out in the consortium CDI Contract no. 29 PCCDI/2018.

Participant în the FRAME project.

Participant în the RESOURCE 731166 project.

Participant în the PN 19-45-01-02 project.

Participant în the PN 19 – 45 – 02-02 project.

Participant în the project Contract for the provision of services no. 2/2307/22.01.2021 between the Geological Institute of Romania – IGR and S.C. IBERO MYNERAL S.R.L. Luduș. Theme: (Inventory of cretaceous-age kaolin clays (Aptian) from the perimeter of Tortomanu – Sat Nou – Defcea – Țibrin).